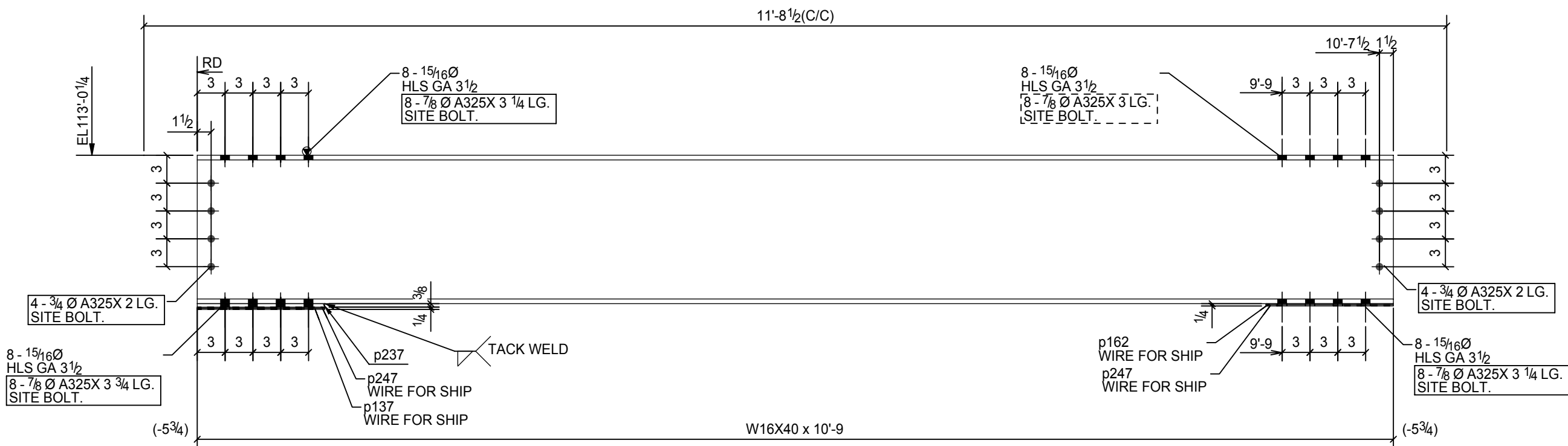
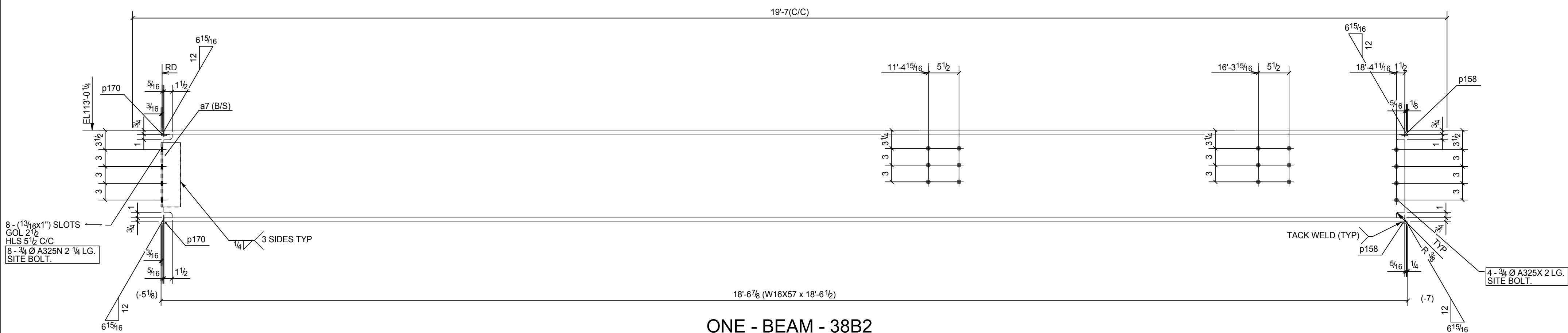


ONE - BEAM - 38B1

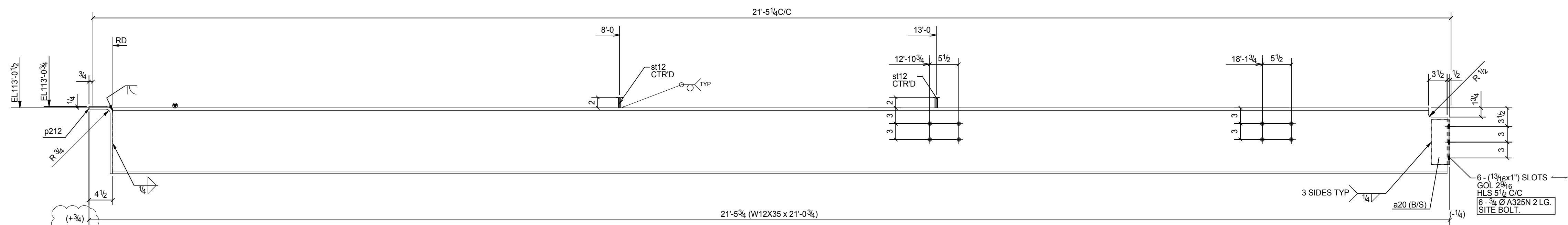


ONE - BEAM - 38B3



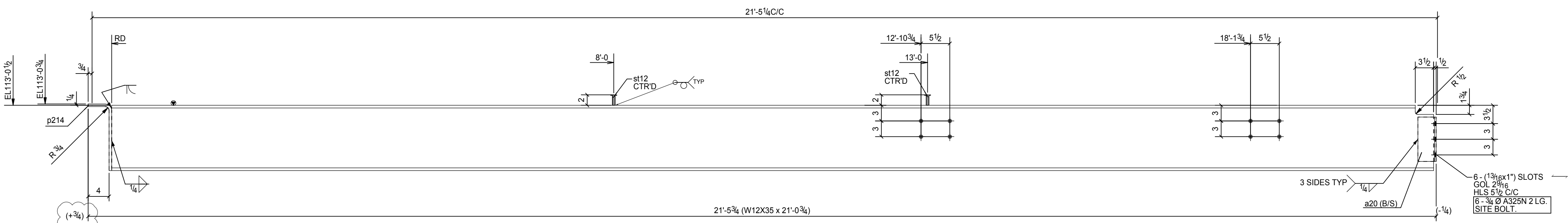
ONE - BEAM - 38B2

(ANGLE 3 1/2 LEG WELDED WITH BEAM)



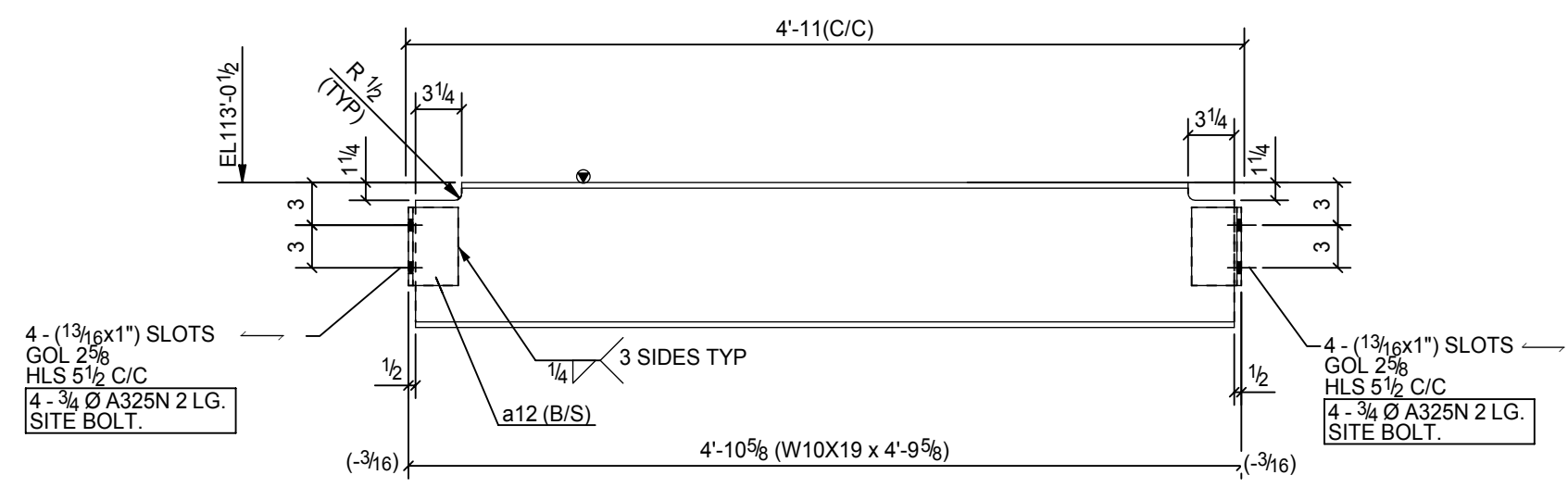
ONE - BEAM - 38B4

(ANGLE 3 1/2 LEG WELDED WITH BEAM)



ONE - BEAM - 38B5

(ANGLE 3 1/2 LEG WELDED WITH BEAM)



2 - BEAMS - 38B6

SEQ.				BILL OF MATERIAL						
A	B	C	D	SHIP MARK	PIECE MARK	QTY.	DESCRIPTION	LENGTH	GRADE	REMARKS
1	0	0	0	38B1		1	W16X57	19'-10"	A992	NO PAINT
					p158	2	PL14X1	0'-7 1/8"	A36	
					p161	1	PL18X7 1/2	1'-1 3/4"	A36	
					p247	1	PL18X7 1/2	1'-1 3/4"	A36	
1	0	0	0	38B2		1	W16X57	18'-6 1/2"	A992	NO PAINT
					a7	2	L4X3-1/2X5/16	0'-11 1/2"	A36	
					p158	2	PL14X1	0'-7 1/8"	A36	
					p170	2	PL14X1	0'-7 1/8"	A36	
1	0	0	0	38B3		1	W16X40	10'-9"	A992	NO PAINT
					p137	1	PL18X7 1/2	1'-1 3/4"	A36	
					p162	1	PL18X7 1/2	1'-1 3/4"	A36	
					p237	1	PL38X7	1'-1 3/4"	A36	
					p247	2	PL18X7 1/2	1'-1 3/4"	A36	
1	0	0	0	38B4		1	W12X35	21'-0 3/4"	A992	NO PAINT
					a20	2	L4X3-1/2X5/16	0'-8 1/2"	A36	
					p212	1	PL12X6 1/2	1'-4 5/16"	A36	BENT PLATE
					st12	2	STUD-1/2-DIA	0'-2"	A108	
1	0	0	0	38B5		1	W12X35	21'-0 3/4"	A992	NO PAINT
					a20	2	L4X3-1/2X5/16	0'-8 1/2"	A36	
					p214	1	PL12X6 1/2	1'-4 5/16"	A36	BENT PLATE
					st12	2	STUD-1/2-DIA	0'-2"	A108	
2	0	0	0	38B6		2	W10X19	4'-9 5/8"	A992	NO PAINT
					a12	8	L4X3-1/2X5/16	0'-5 1/2"	A36	

NOTE :
1. NO PAINT

SHOP NOTES

- ALL HOLES 13/16 Dia U.N.O.
- E70XX ELECTRODES
- MATERIAL A36 UNO

REV.	DATE	DESCRIPTION
C		REVISED AS MARKED
B		ISSUED FOR FABRICATION
A		ISSUED FOR APPROVAL

Detailer: **D & A TECHNICAL SERVICES, INC.**
LAUREL, MARYLAND PH: 3012725593 FAX: 2402355302

ISSUED For	Date	Ref. Dwg.	E1	Dwg. Description
APPROVAL		Project:		BEAM DETAILS
FABRICATION		Location:		
REVISED		Customer:		
		Arch:		
		Checked By		
			Job No.	Dwg. No.
				Rev.