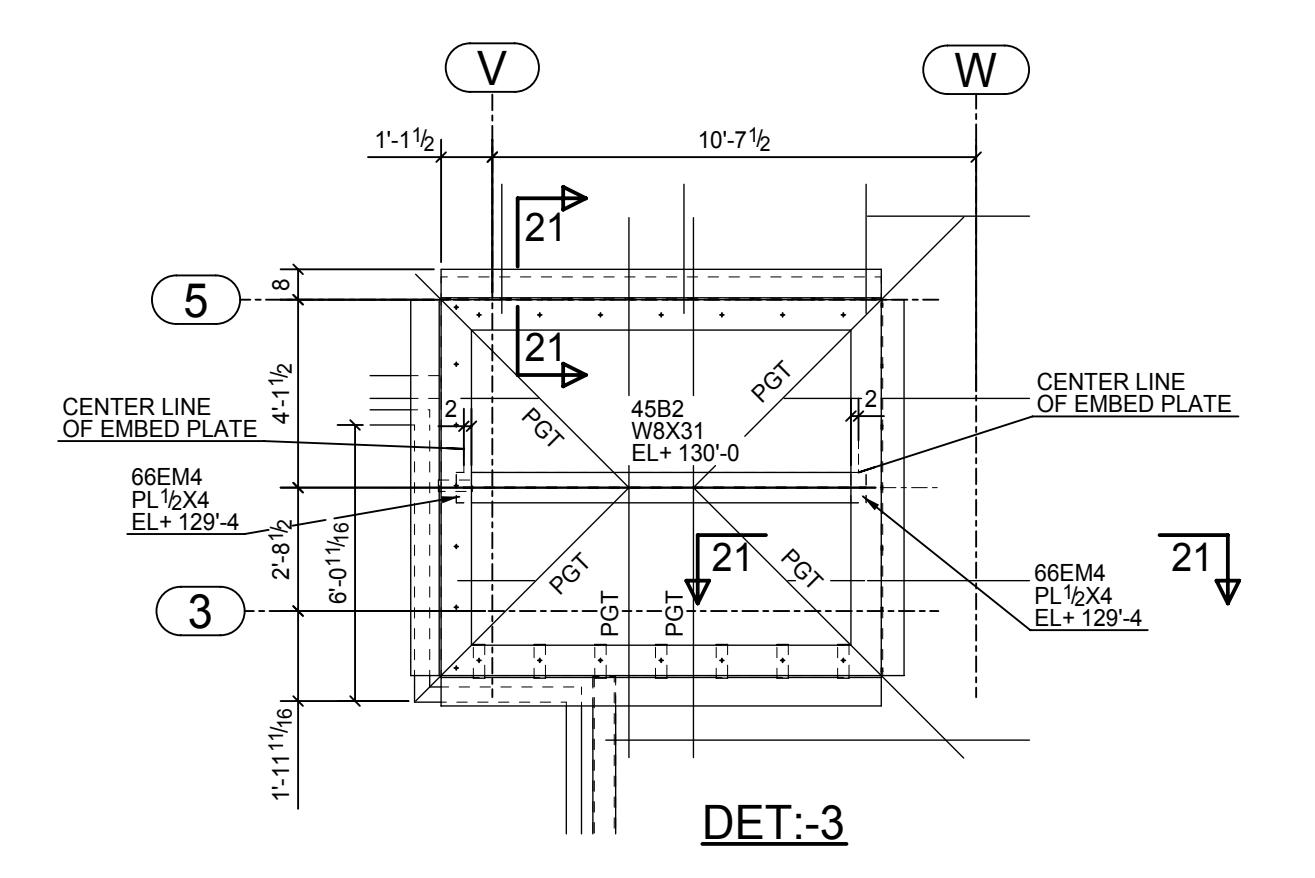
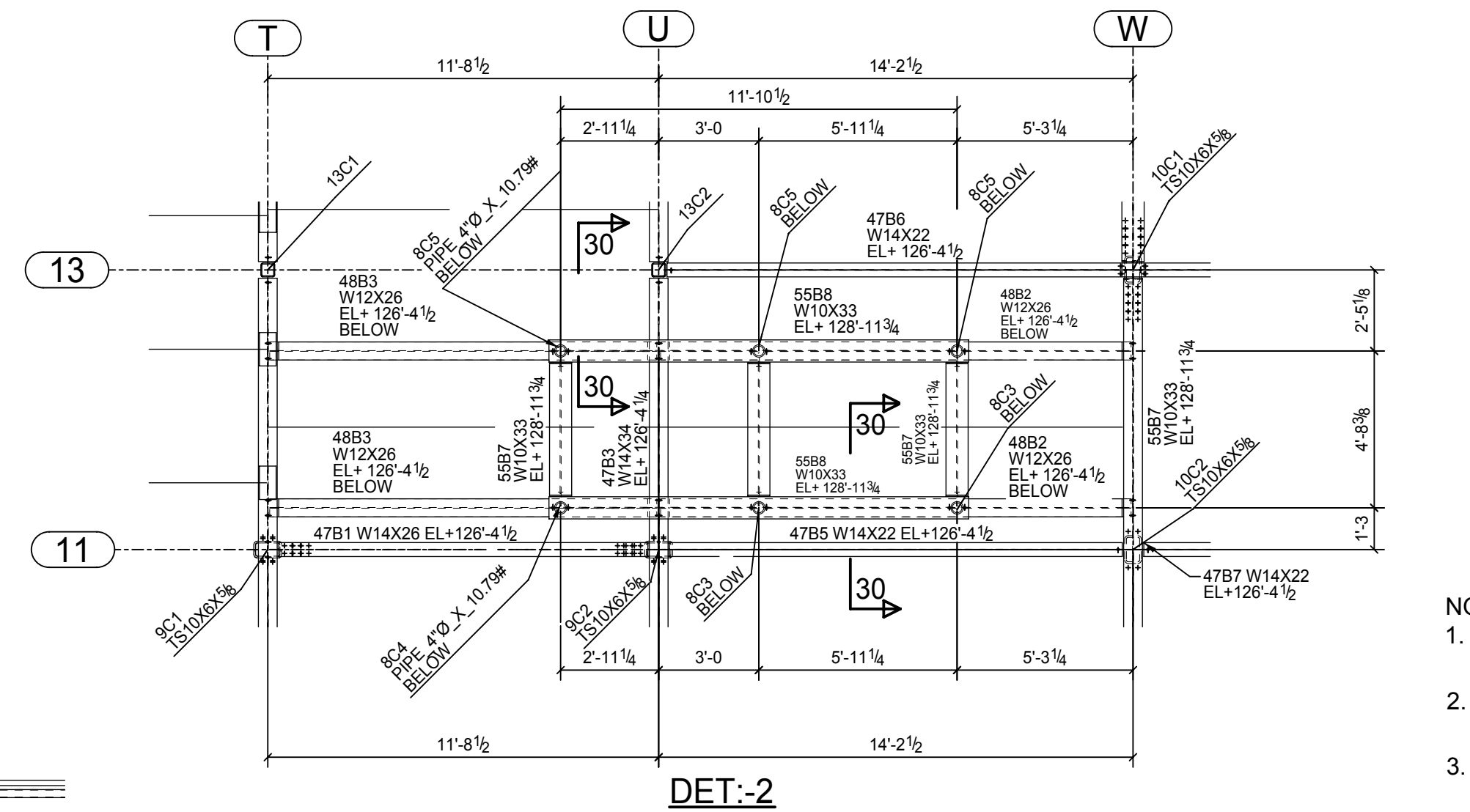
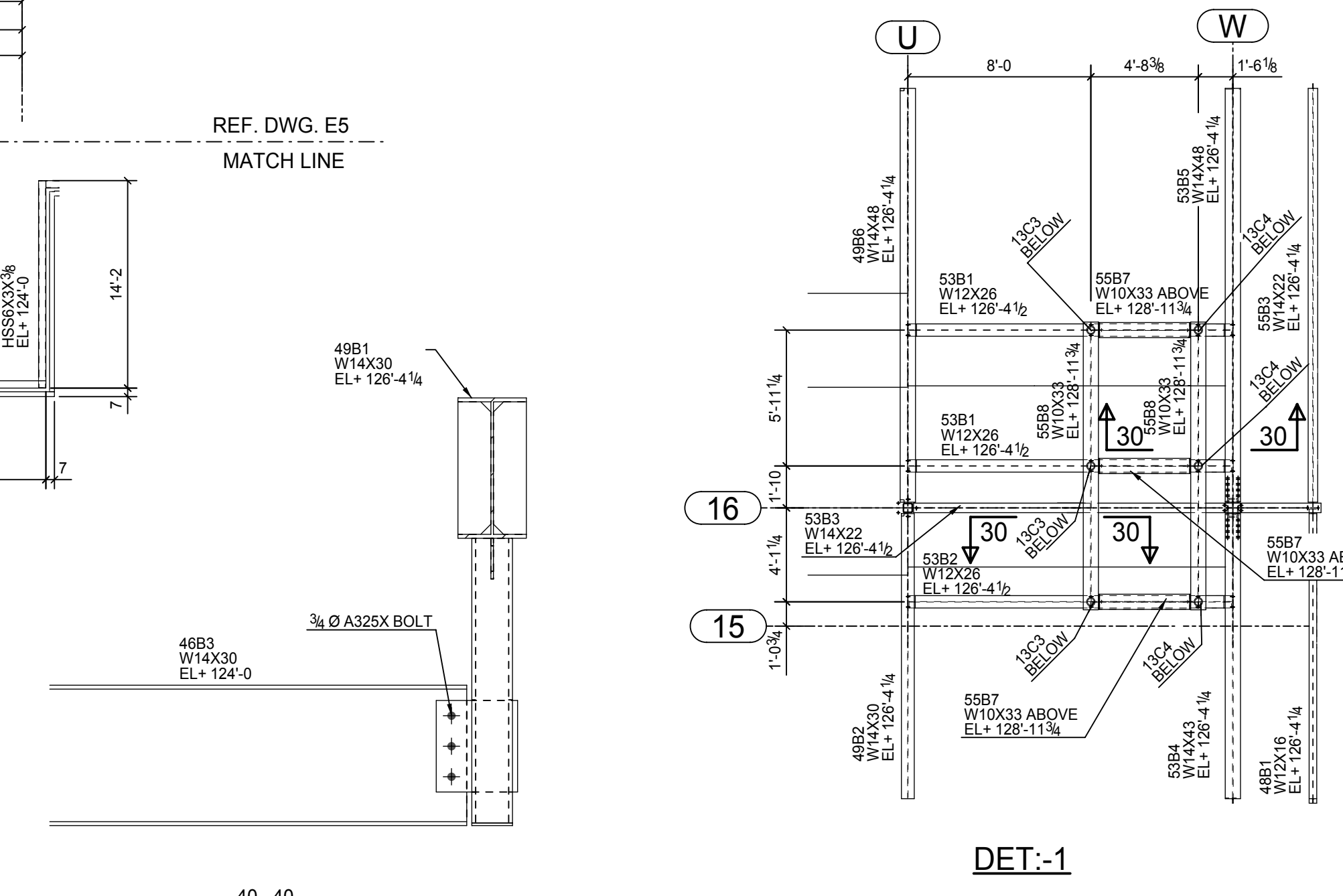


**PART ROOF FRAMING PLAN (SEQ.A)**  
(ALL ELEV. INDICATES F.O.S. (U.N.O.))



- NOTES:-**
- ALL WF BEAM WITH DOUBLE SHEAR CONN. FRAMED INTO COL. USE 3/4" A325 N BOLTS.
  - ALL SINGLE SHEAR PLATE CONNECTION OF BEAM USE 3/4" A325 X BOLTS U.N.O
  - W8x31, W8x40 & W10x33 @ DOUBLE SHEAR CONNECTION USE 3/4" A325 X BOLTS U.N.O
  - FOR W16x57 & W14x48 @ MOMENT PLATE CONN. USE 8 NO. 7/8" A490 X BOLTS
  - FOR ALL OTHER BEAMS @ MOMENT PLATE CONN. USE 3/4" A325 X BOLTS.
  - FOR SECTIONS REFERENCE DWG. NO E14, E15 & E16
  - FOR LINTEL MARKING REF. SEPARATE DWG.
  - ALL HAMBRO JOIST SPACING VERIFY WITH HAMBRO JOIST DWG.
  - FOR ALL WF BEAM TO WF COL. FIELD WELDED MOMENT CONN. REF. ERECTION DWG. NO. E17
  - PMT, PGT PMP & PBT LOCATION & SPACING REF. BY PRE-ENGINEERED METAL SUPPLIER DWGS.

**SHOP NOTES**

- ALL HOLES 13/16 Dia U.N.O.
- E70XX ELECTRODES
- MATERIAL A36 UNO

REV.	DATE	DESCRIPTION
A		ISSUED FOR APPROVAL
B		ISSUED FOR FIELD USE

Detailed by: **D & A TECHNICAL SERVICES, INC.**  
LAUREL, MARYLAND PH: 3012725593 Fax: 2402355302

ISSUE FOR	DATE	Rev. Descr	Dwg. Description
APPROVAL		S3.1B& S5.1 TO S5.3	PART ROOF FRAMING PLAN (SEQ.A)
APPROVAL			Project:
APPROVAL			Location:
			Customer:
			Arch:
			Detailed By:
			Date:
			Job No.:
			Dwg. No.:
			Rev.:
			E2

