

ROOF LEVEL LINTEL EMBED & MISC. FRAMING PLAN(SEQ.-C)

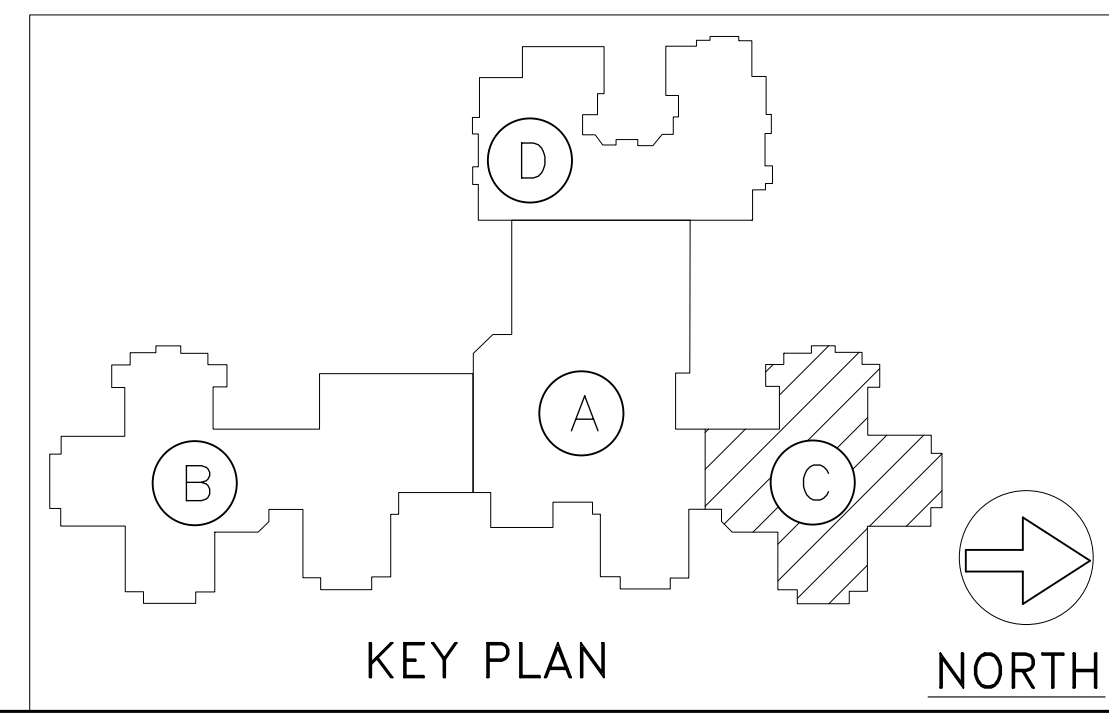
- NOTE:-
1. REFER DESIGN DWG NO S3.16,S6.1 & S6.2
 2. SEC.23-23.26 32,33 34, REFER DWG NO E16,E17 & E18
 3. ALL CLOUDED PORTIONS TO BE VERIFY BEFORE ERECTION
 4. G.C./ERECTOR PLEASE COORDINATE LINTEL OPENINGS, LOCATION & ELEVATION WITH ARCHITECTURAL DRAWINGS.
 5. PMT, PGT, PMP & PBT LOCATION & SPACING REF. BY PRE-ENGINEERED METAL SUPPLIER DWGS.

NOTE:-
GC PLEASE VERIFY COORDINATE ALL EMBED POSITONS/ EL. WITH RELEVANT PGT,PMT,PMP & PBT TRUSS MANUFACTURER DWG.

SHOP NOTES

- 1) ALL HOLES 13/16 Dia U.N.O.
- 2) E70XX ELECTRODES
- 3) MATERIAL A36 UNO

REV.	DATE	DESCRIPTION
A		ISSUED FOR APPROVAL
B		ISSUED FOR FIELD USE



Detailer: **D & A TECHNICAL SERVICES, INC.**
LAUREL, MARYLAND PH: 3012725593 Fax:2402355302

ISSUE FOR	DATE	Rev. Dwg.	Dwg. Description
APPROVAL			ROOF LEVEL LINTEL EMBED & MISC. FRAMING PLAN(SEQ.-C)
APPROVAL			Project :
APPROVAL			Location :
			Customer :
			Arch :
			Detailed By: _____ Date: _____
			Checked By: _____ Date: _____
			Job No. _____ Dwg. No. E13 Rev. _____