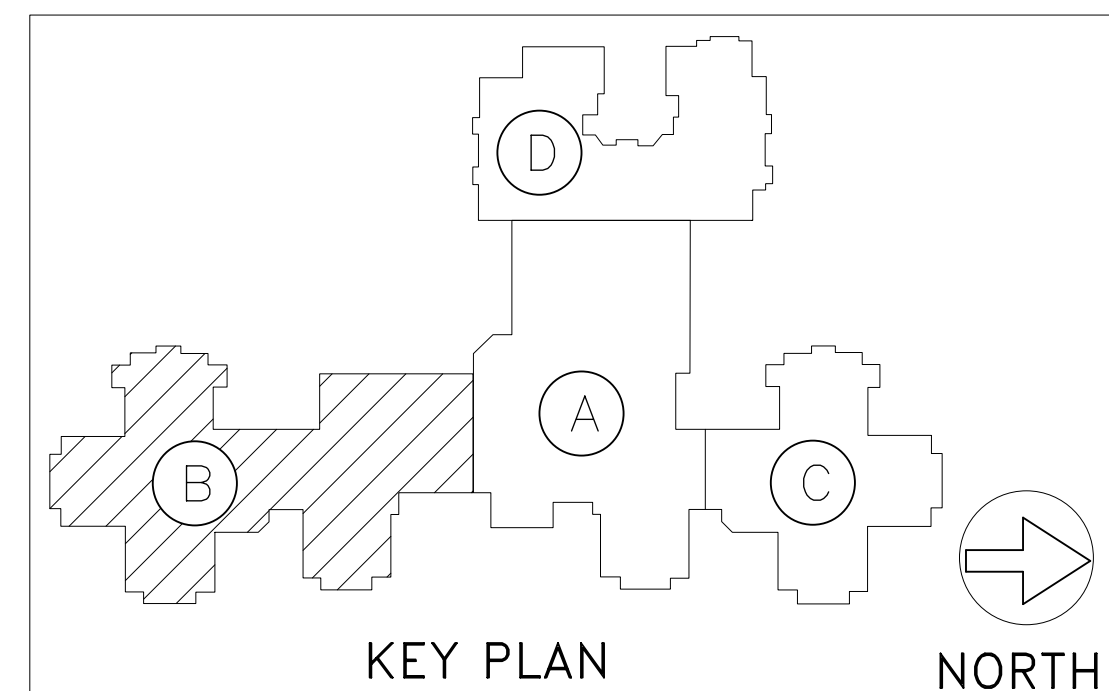
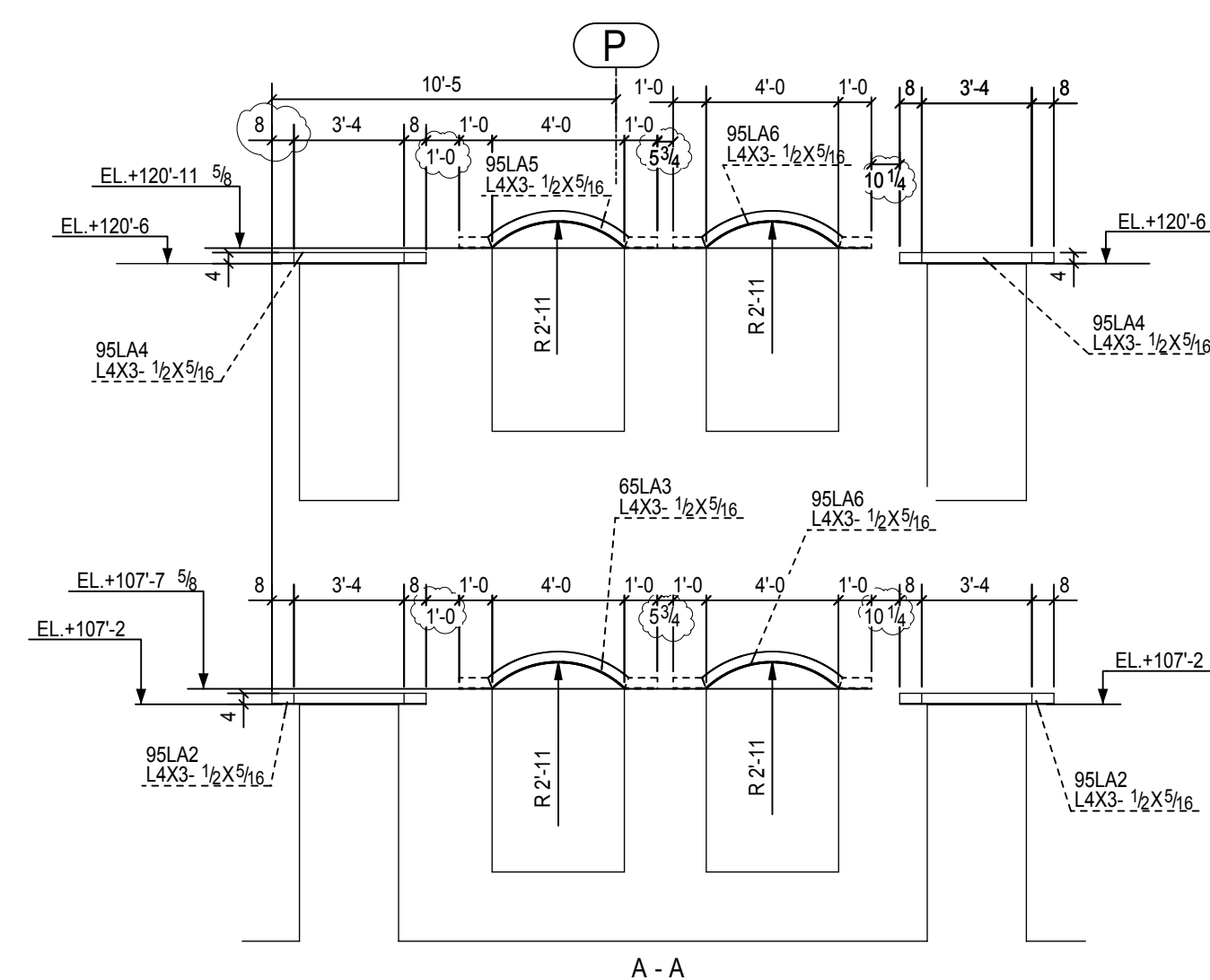


MAIN LEVEL LINTEL & MISC. MARKING PLAN (SEQ.-B)

- NOTE:-
1. REF. DESIGN DWG. NO S2.1A,S5.1, S5.2 A2.0a, A8.4,A8.5 & A8.6
 2. SEC. 11-11, 12-12 & 13-13 REF. DWG NO. E14 & E15
 3. FOR SECTION 12A-12A REF. DWG. E8
 4. ALL CLOUDED PORTION TO BE VERIFY BEFORE ERECTION
 5. G.C./ERECTOR PLEASE COORDINATE LINTEL OPENINGS, LOCATION & ELEVATION WITH ARCHITECTURAL DRAWINGS.



SHOP NOTES			
1) ALL HOLES 13/16 Dia U.N.O.			
2) E70XX ELECTRODES			
3) MATERIAL A36 UNO			
REV.	DATE	DESCRIPTION	
A		ISSUED FOR APPROVAL	
B		ISSUED FOR FIELD USE	
Detailer: D & A TECHNICAL SERVICES, INC. LAUREL, MARYLAND PH: 3012725593 Fax: 2402355302			
ISSUE FOR	DATE	Ref. Dwg.	Dwg. Description
APPROVAL			MAIN LEVEL LINTEL & MISC. MARKING PLAN (SEQ.-B)
APPROVAL		Project :	
		Location :	
		Customer :	
		Arch :	
		Detailed By:	Date:
		Checked By:	Date:
		Job No.	Dwg. No.
			E9